



Morgans

PROPERTY

53 Maitland Street, Dunfermline, KY12 8AF

Offers Over £105,000

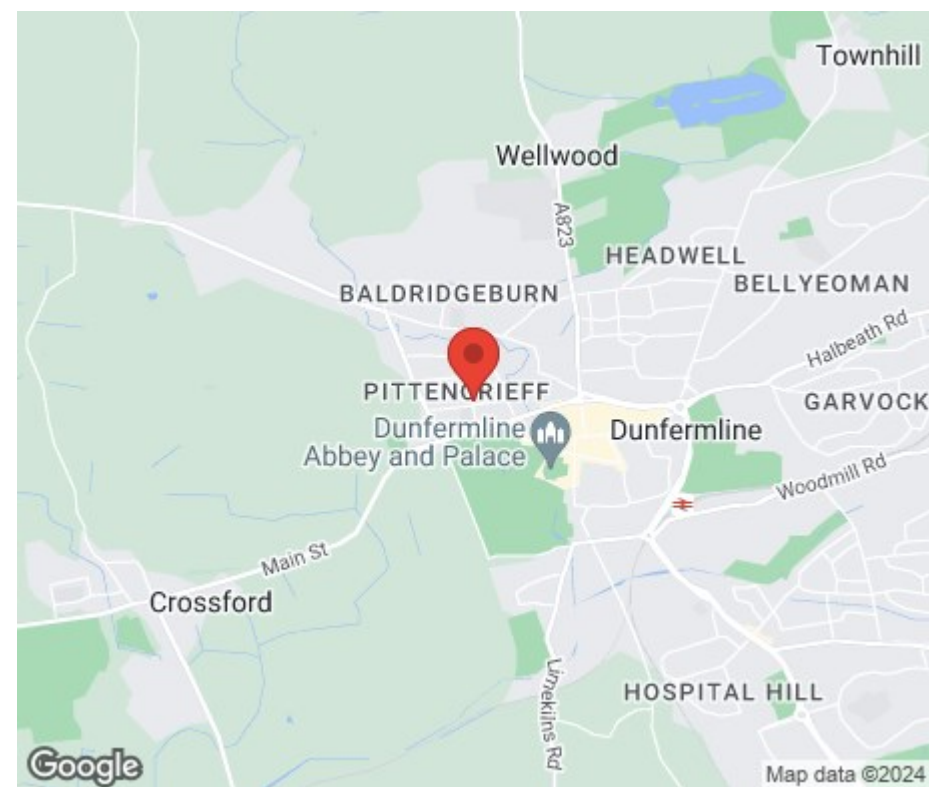
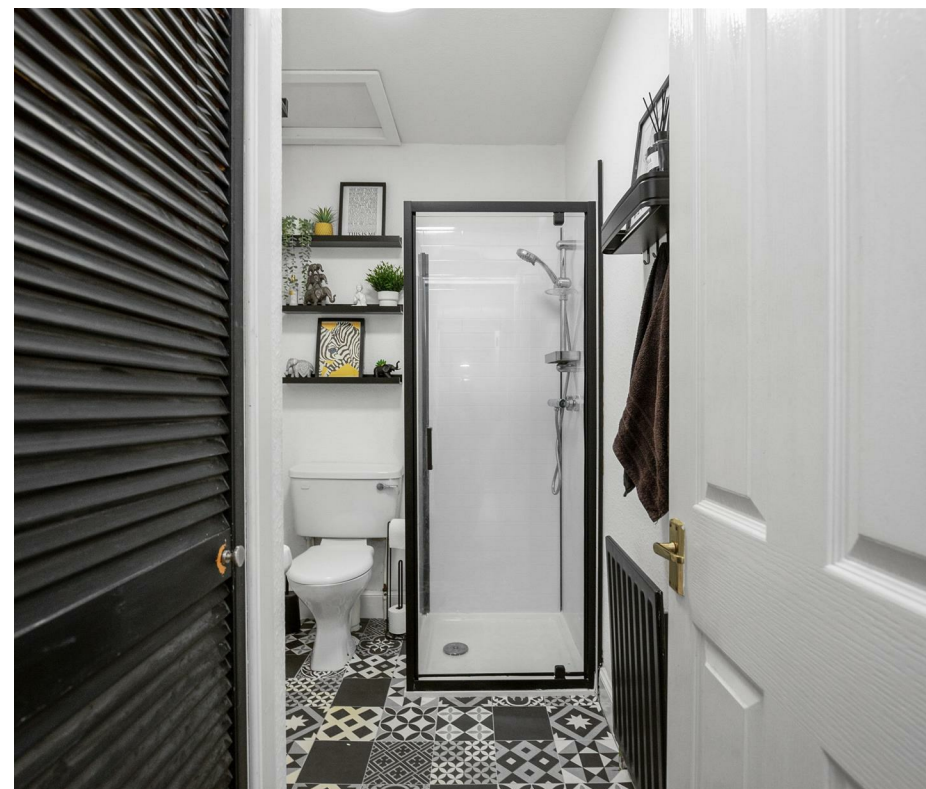






Superb traditional ground floor garden apartment adjacent to Pittencrieff Park and a five minute walk into the city centre where all amenities are at your fingertips. The property is a credit to the present owner and is offered in move in condition. An excellent first time purchase or buy to let as would give a good annual yield. The subjects are beautifully presented with own front and back door, they briefly comprise entrance vestibule, open plan lounge with fitted kitchen and appliances, double bedroom and modern shower room. There is a rear utility room and door to well maintained shared gardens, patio and drying green. Ample on street parking. The property is double glazed with gas central heating.





LOCATION

The ancient capital of Dunfermline won its bid to have official city status in May 2022, as part of the civic honour's competition to celebrate the Queen's platinum jubilee. The City of Dunfermline is of considerable historic interest and is the resting place of King Robert the Bruce. Carnegie's Birthplace museum, the Abbey and Abbot House reflect the historic interest of the city, whilst recent developments have seen Dunfermline move into the modern era with Carnegie Museum and Library. Dunfermline is located approximately five miles from the Forth bridges and is therefore particularly popular with commuters to Edinburgh and many parts of the central belt with easy access to the M90 motorway with its direct links to Edinburgh, Perth and Dundee and across the Kincardine Bridge by way of motorways to Stirling, Glasgow and the West. It benefits from a full range of shops, social and leisure facilities and educational establishments. The local railway stations provide a regular service to Edinburgh with intercity links to other parts of the UK. There are regular and convenient bus services both local and national.

EXTRAS INC. IN SALE/AGENTS NOTE

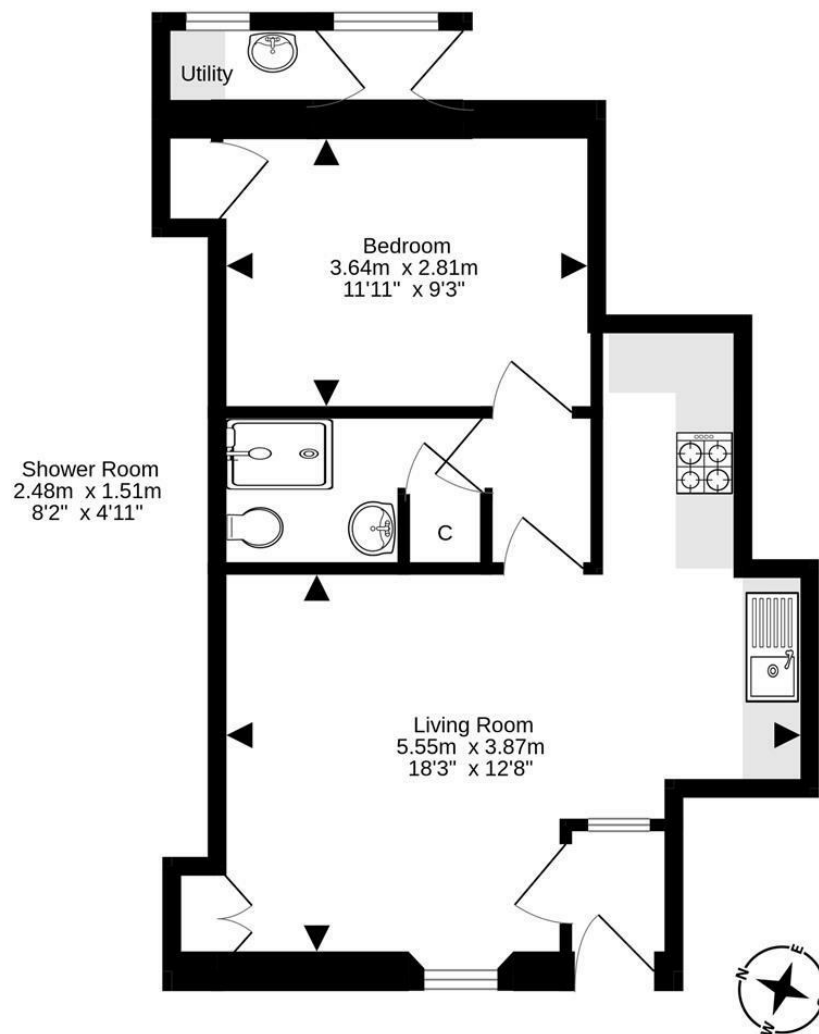
All floor coverings, blinds, bathroom and light fittings together with integrated appliances.

From 1st February 2022, residential properties in Scotland are required by law to have installed a system of inter-linked smoke alarms, carbon monoxide detectors and heat detectors (the "inter-linked system"). No warranty is given to the interlinked system installed in this property.









For details of the total internal floor area, please refer to the property's Home Report. This plan is for illustrative purposes only and should be used as such by a prospective purchaser.
Made with Metropix ©2024

Morgans

PROPERTY

SOLICITORS | PROPERTY

33 East Port, Dunfermline, Fife, KY12 7JE

Tel: 01383 620222 Fax: 01383 621213

www.morganlaw.co.uk



espc

s1homes.com

rightmove

Zoopla.co.uk

onTheMarket.com

naea | propertymark
PROTECTED

AGENTS NOTE These particulars do not form part of any contract and the statements or plans contained herein are not warranted nor to scale. Approximate measurements have been taken by electronic device at the widest point. Services and appliances have not been tested for efficiency or safety and no warranty is given as to their compliance with any Regulations. No movable items will be included in the sale.